

# ONELAN

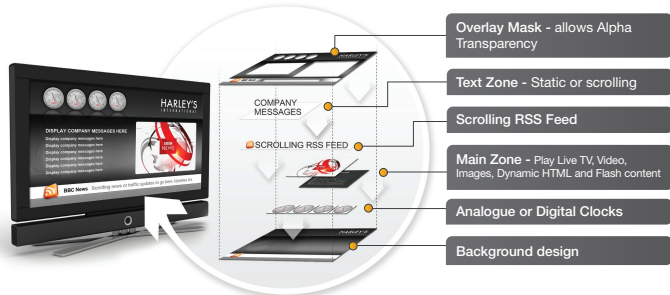
## Content Management Server (CMS)

A sophisticated planning, design, distribution and management appliance for enterprise multichannel digital signage networks.

### Design your content

- ◆ Multiple screen formats
- ◆ Unlimited number of screen layout zones in any position, layer and time
- ◆ Variable transparency for content and layout zones
- ◆ Independent background audio capability
- ◆ Drag and drop screen layout and playlist design

### Example screen layout design - zones can be any position and layer



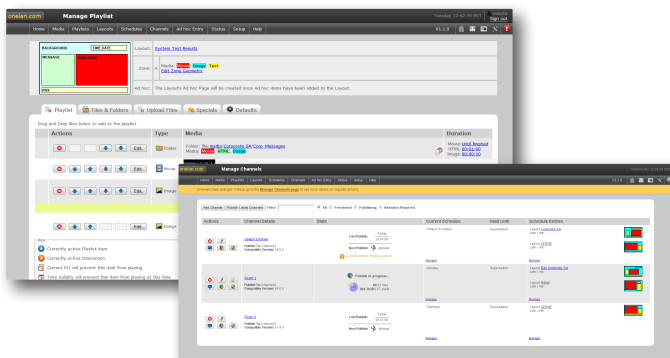
### Multi-media content support



### Automate your playlists

- ◆ Flexible scheduling
- ◆ Folder play for sub playlists of content
- ◆ Conditional playback based on player tagging (PLI)
- ◆ Content triggering (advance to/rendezvous)

### Manage playlists and channels



### Distribute your content

- ◆ Highly scalable
- ◆ Simultaneous publishing
- ◆ 1000's of simultaneous subscribers
- ◆ Automatic publishing option
- ◆ Inbuilt traffic shaper for bandwidth control
- ◆ Near real-time messaging for Ad Hoc content
- ◆ Requires separate player for live preview



### Web User Interface

- ◆ Multilingual (14 languages)
- ◆ Content design and approval workflow
- ◆ Simple to use for non-technical end users
- ◆ Powerful features for expert users
- ◆ Unlimited users (5 concurrent)
- ◆ User rights management

### Key Features

- ◆ Flexible content design
- ◆ Scalable content distribution
- ◆ Secure and enterprise ready
- ◆ Sophisticated role based permissions / delegated control
- ◆ Automated back up to network or local storage
- ◆ Full audit trail of content changes
- ◆ Linux-based network appliance
- ◆ Inbuilt firewall
- ◆ LDAP support

To find out more about CMS Server, please contact us on: **+44 (0) 1491 411 400** or **sales@onelan.com**



# The enterprise CMS Server simplifies complicated tasks and allows users to produce almost any content experience for their audiences.

## Easy access to external live content sources

- ◆ Newsfeed and content apps support
- ◆ Support for IPTV streaming
- ◆ Cross domain support for dynamic Adobe Flash and HTML5 content
- ◆ Web page cropping and zoom facility
- ◆ Live video / TV management capability
- ◆ Collection and intelligent display of data from external data sources

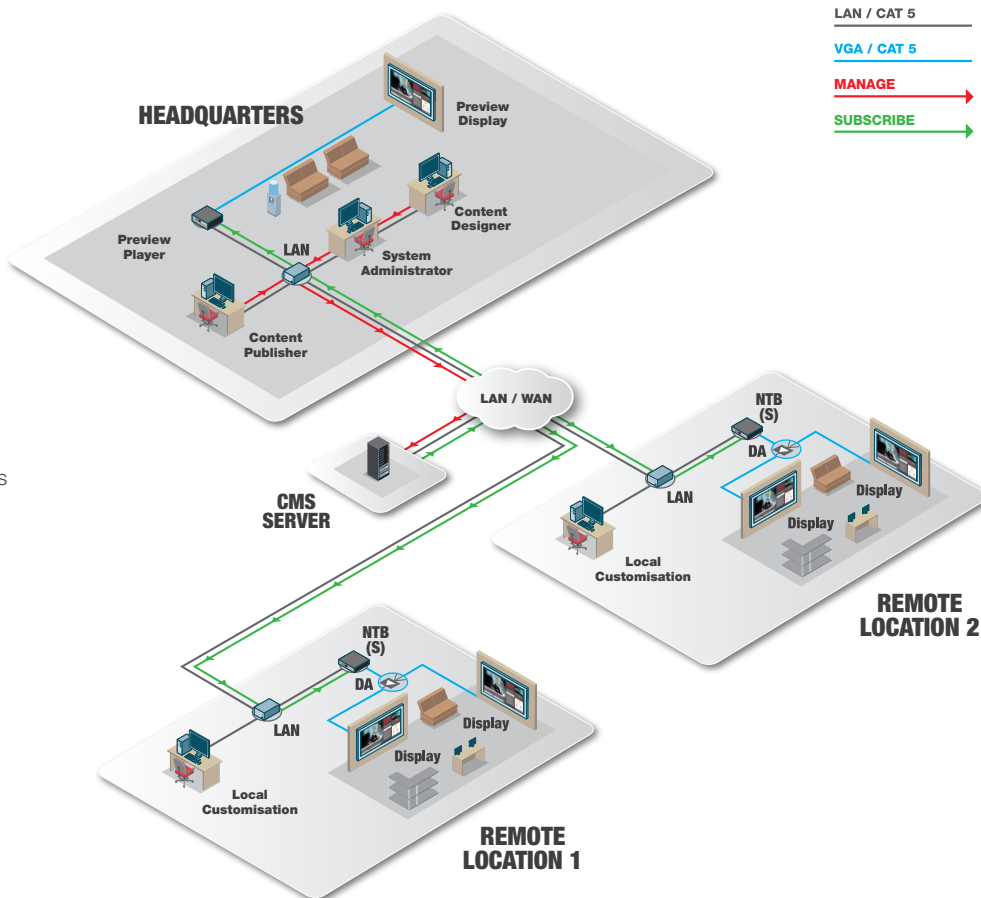
## Content interaction

- ◆ Touch pass through to HTML content
- ◆ Playlist control by touch event
- ◆ XML API for integration with external systems
- ◆ GPIO for bi-directional control
- ◆ Optional infra red remote control devices

## Ad hoc local content management

- ◆ Design simplified and branded Ad Hoc user interfaces
- ◆ Instant messaging to a single player or group of players
- ◆ Local uploading of media for automatic playback according to pre-defined rules
- ◆ Updating of dynamic tables
- ◆ Local/remote content activation
- ◆ Per channel override from centre

## How it works



## Themed Ad Hoc Page



## CMS Server Specifications

Processor	Intel® Xeon® CPU E3
Storage	<ul style="list-style-type: none"> <li>• System RAM – 16GB</li> <li>• System Media Storage – 500 GB Hard Disk Drive (HDD)</li> </ul>
Network interfaces	<ul style="list-style-type: none"> <li>• Ethernet: 1000/100/10BaseT</li> </ul>
Physical	Dimensions: 280 x 268 x 77mm Power consumption: Typically 60 W from internal PSU Cooling: Fan
Media	<ul style="list-style-type: none"> <li>• All media supported by your player (see the player specification sheet)</li> </ul>
Media Sources	<ul style="list-style-type: none"> <li>• Hard Disc: All media types</li> <li>• Ethernet: MPEG-TS, UDP, IP streaming (optional)</li> <li>• Internet: HTML (web pages), RSS feeds (with multilingual support), XML files</li> </ul>
Virtual Machine options available	
ONELAN reserves the right to alter specification and functionality.	



Andersen House, Newtown Road, Henley-on-Thames, RG9 1HG, UK  
 T: +44 (0)1491 411 400 F +44 (0)1491 579 254 E: sales@onelan.com